

# NAV310 - Firmware release information 1.x.x

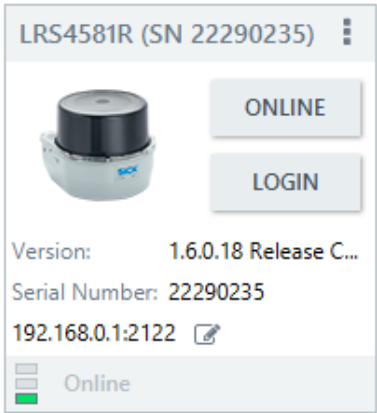
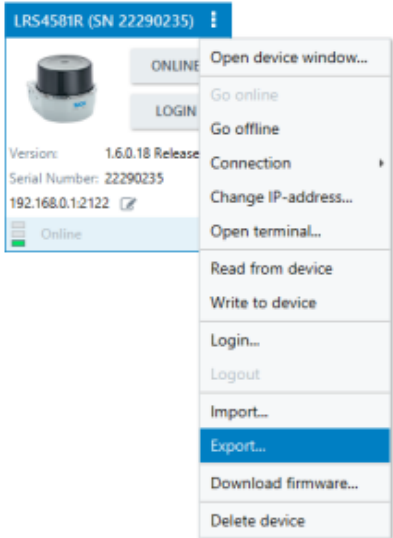
- 1 [Update Instructions](#)
- 2 [Firmware V1.50.4](#)
  - 2.1 [New Features](#)
    - 2.1.1 [Add CoLa parameter to disable USP port](#)
    - 2.1.2 [UI support of USP disable functionality](#)
  - 2.2 [Improvements](#)
  - 2.3 [Bug fixes](#)
- 3 [Firmware V1.50.3](#)
  - 3.1 [New Features](#)
    - 3.1.1 [Improved Cybersecurity](#)
  - 3.2 [Improvements](#)
  - 3.3 [Bug fixes](#)
    - 3.3.1 [LMDscandata did not report the correct outputstate](#)
    - 3.3.2 [LoadApplicationDefaults" has no function](#)
- 4 [Known issues](#)
- 5 [Contact us](#)
  - 5.1 [Product website](#)

**SICK**  
Sensor Intelligence.

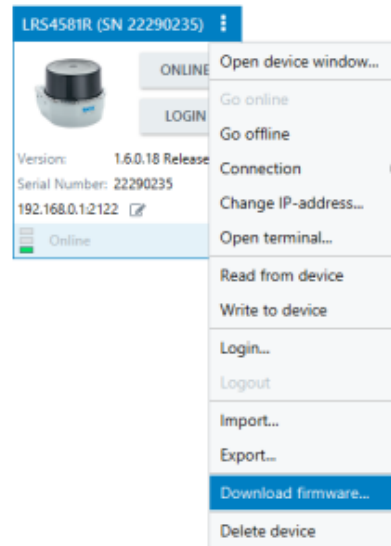


# Update Instructions

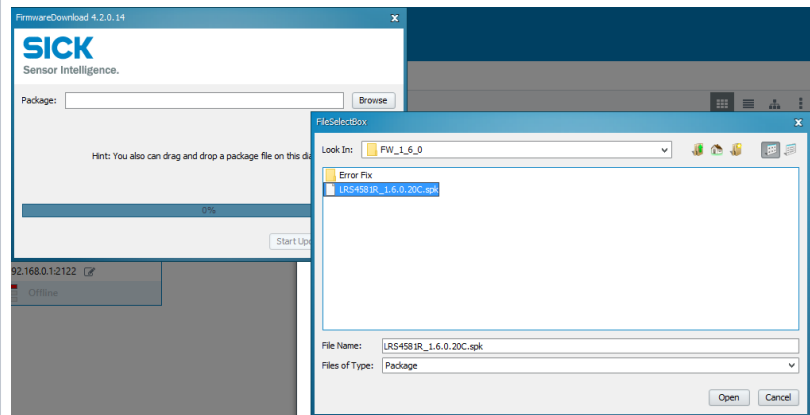
 Downgrade of firmware versions is not allowed and not possible!

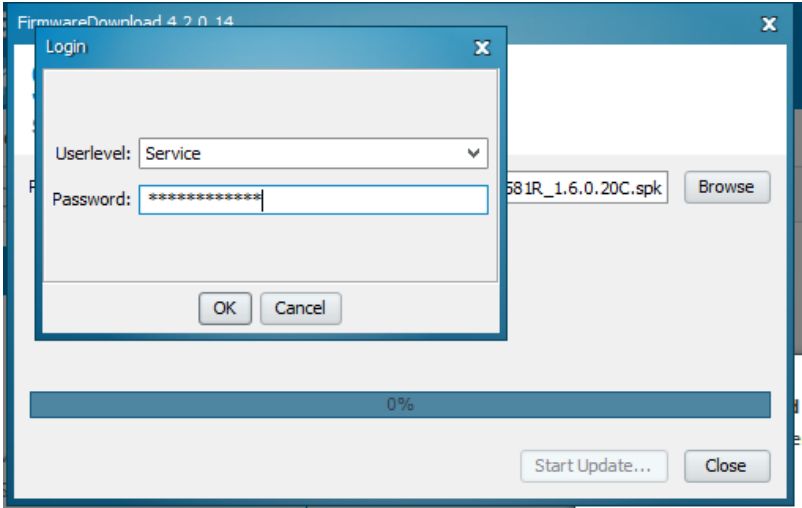
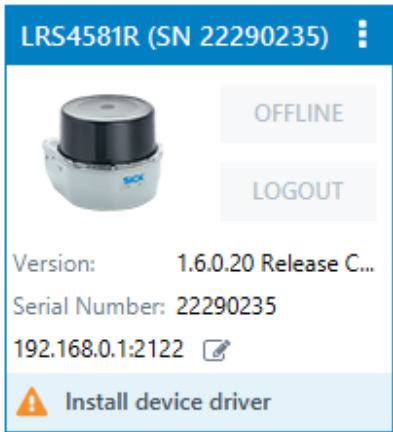
1	Save and unpack the firmware files on your local hard disk (please use full admin rights on your PC).	
2	Make sure your LiDAR is connected via Ethernet to your PC, in the same subnet and booted up. Power supply must remain stable during the update process.	
3	Use SOPAS ET or AppManager for firmware updates. The following instructions refer to SOPAS ET only.	
4	Search for the connected LiDAR and drag and drop the device into the SOPAS project.	
5	Recommendation: Save your parameter file (.sopas file) before you start the update.	

6 Open the settings and choose **Download firmware**.



7 Select the firmware package (.spk) and start the update process.



<p>8 Log-in to the LiDAR with user level: <b>Service</b> and password: <b>servicelevel</b></p> <p>The update procedure may take up to 2 minutes.</p>	
<p>9 Wait until the reboot is completed and the device LED turns green.</p>	
<p>10 Check the SOPAS window for the correct firmware version.</p> <p>Depending on the firmware update, the SOPAS ET device driver may need to be reinstalled by pressing "install device driver".</p>	
<p>11 Before the LiDAR is used for operation, ensure the device works as expected and that all parameters are set as intended.</p>	
<p>12 In case of uncertainty:</p> <ul style="list-style-type: none"> <li>• Set factory defaults in the device (user level "Service")</li> <li>• Load your parameter file (.sopas) in the device</li> </ul>	
<p>13 Done</p>	

# Firmware V1.50.4

## New Features

### Add CoLa parameter to disable USP port

For Cybersecurity reasons it should be possible to deactivate the USP port. For this add new boolean CID parameter "EtherUspEnabled" with CommName ElUspEnable, access level AuthClient, read/write, ParamEEProm, default true. During bootup the USP port is opened depending on this variable. LDxxxx device types without USP port are not affected by this change.

### UI support of USP disable functionality

Implement SOPAS ET Checkbox for disable USP port implemented at page "Ethernet settings" and add also tooltip and info text.

---

## Improvements

-

---

## Bug fixes

-

---

# Firmware V1.50.3

## New Features

### Improved Cybersecurity

For an improved Cybersecurity the password may be changed for the access levels Maintenance and Authorized Clients. To reset the passwords it is sufficient to perform a "LoadFactoryDefaults" in SOPAS ET. Attention: This will also reset all other settings as the IP address. Performing "LoadApplicationDefaults" is not sufficient. The best way is to save the settings into a \*.sdv file before performing the "LoadFactoryDefaults". It is possible to perform a "LoadFactoryDefaults" already at the level "Authorized client" if the password is not changed ( client ) or the current password is available. If the password for "Authorized client" is unknown, then the SICK service has to be contacted for further assistance.

---

### Improvements

-

---

### Bug fixes

#### **LMDScandata did not report the correct outputstate**

The digital outputs status in the LMDScandata was not updated. This had been corrected.

#### **LoadApplicationDefaults" has no function**

The function LoadApplicationDefaults did not work at all for NAV310 series. With this change, the standard functionality of LoadApplicationDefaults had been restored.

### Known issues

No known issues

---

Contact us

Product website

<https://www.sick.com/nav3xx>